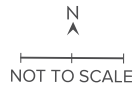


UNIT PLAN

2 Bedroom + 2 Toilet - TYPE 11



KEY PLAN



BLOCK - B & C



C-0226 - C-1826, C-0125 - C-1825

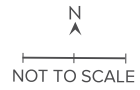


SUPER BUILT-UP AREA	CARPET AREA	BALCONY AREA
111.19 Sq.m. 1197 Sq.ft.	75.22 Sq.m. 810 Sq.ft.	4.48 Sq.m. 48 Sq.ft.

The information depicted herein viz., master plans, floor plans, furniture layout, fittings, illustrations, specifications, designs, dimensions, rendered views, colours, amenities and facilities etc., are subject to change without notifications as may be required by the relevant authorities or the Developer's architect, and cannot form part of an offer or contract. Whilst every care is taken in providing this information, the Developer cannot be held liable for variations. All illustrations and pictures are artist's impressions only. The information is subject to variations, additions, deletions, substitutions and modifications as may be recommended by the company's architect and/or the relevant approving authorities. The Developer is wholly exempt from any liability on account of any claim in this regard. (1 square metre = 10.764 square feet). E & OE. All dimensions and calculations are done in metric system (M/Sq.m), and imperial system (Ft/Sq.ft) shown is for reference only. All dimensions indicated in the drawing are from unfinished surfaces, excluding plaster thickness and tile thickness.

UNIT PLAN

3 Bedroom + 2 Toilet - TYPE 08



KEY PLAN



BLOCK - A



BLOCK - B & C



A-0104- A-1804
B-0112 - B-1812

SUPER BUILT-UP AREA

126.53 Sq.m.
1362 Sq.ft.

CARPET AREA

86.16 Sq.m.
927 Sq.ft.

BALCONY AREA

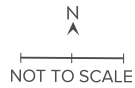
4.12 Sq.m.
44 Sq.ft.



The information depicted herein viz., master plans, floor plans, furniture layout, fittings, illustrations, specifications, designs, dimensions, rendered views, colours, amenities and facilities etc., are subject to change without notifications as may be required by the relevant authorities or the Developer's architect, and cannot form part of an offer or contract. Whilst every care is taken in providing this information, the Developer cannot be held liable for variations. All illustrations and pictures are artist's impressions only. The information is subject to variations, additions, deletions, substitutions and modifications as may be recommended by the company's architect and/or the relevant approving authorities. The Developer is wholly exempt from any liability on account of any claim in this regard. (1 square metre = 10.764 square feet). E & OE. All dimensions and calculations are done in metric system (M/Sq.m), and imperial system (Ft/Sq.ft) shown is for reference only. All dimensions indicated in the drawing are from unfinished surfaces, excluding plaster thickness and tile thickness.

UNIT PLAN

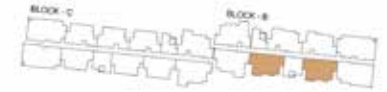
3 Bedroom + 2 Toilet - TYPE 07



BLOCK - A



BLOCK - B & C



A-0201- A-1801,A-0108 - A1808
B-0209 - B-1809, B-0116 - B-1816

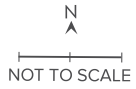


SUPER BUILT-UP AREA	CARPET AREA	BALCONY AREA
130.82 Sq.m. 1408 Sq.ft.	89.80 Sq.m. 967 Sq.ft.	4.12 Sq.m. 44 Sq.ft.

The information depicted herein viz., master plans, floor plans, furniture layout, fittings, illustrations, specifications, designs, dimensions, rendered views, colours, amenities and facilities etc., are subject to change without notifications as may be required by the relevant authorities or the Developer's architect, and cannot form part of an offer or contract. Whilst every care is taken in providing this information, the Developer cannot be held liable for variations. All illustrations and pictures are artist's impressions only. The information is subject to variations, additions, deletions, substitutions and modifications as may be recommended by the company's architect and/or the relevant approving authorities. The Developer is wholly exempt from any liability on account of any claim in this regard. (1 square metre = 10.764 square feet). E & OE. All dimensions and calculations are done in metric system (M/Sq.m), and imperial system (Ft/Sq.ft) shown is for reference only. All dimensions indicated in the drawing are from unfinished surfaces, excluding plaster thickness and tile thickness.

UNIT PLAN

3 Bedroom + 3 Toilet - TYPE 05



BLOCK - B & C



B-0110 - B-1810
C-0124 - C-1824

SUPER BUILT-UP AREA

145.43 Sq.m.
1565 Sq.ft.

CARPET AREA

99.62 Sq.m.
1072 Sq.ft.

BALCONY AREA

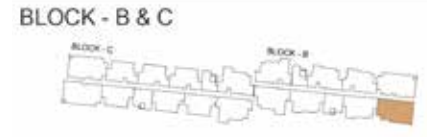
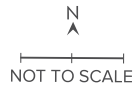
4.24 Sq.m.
46 Sq.ft.



The information depicted herein viz., master plans, floor plans, furniture layout, fittings, illustrations, specifications, designs, dimensions, rendered views, colours, amenities and facilities etc., are subject to change without notifications as may be required by the relevant authorities or the Developer's architect, and cannot form part of an offer or contract. Whilst every care is taken in providing this information, the Developer cannot be held liable for variations. All illustrations and pictures are artist's impressions only. The information is subject to variations, additions, deletions, substitutions and modifications as may be recommended by the company's architect and/or the relevant approving authorities. The Developer is wholly exempt from any liability on account of any claim in this regard. (1 square metre = 10.764 square feet). E & OE. All dimensions and calculations are done in metric system (M/Sq.m), and imperial system (Ft/Sq.ft) shown is for reference only. All dimensions indicated in the drawing are from unfinished surfaces, excluding plaster thickness and tile thickness.

UNIT PLAN

3 Bedroom + 3 Toilet - TYPE 03



A-0107 - A-1807
B-0115 - B-1815

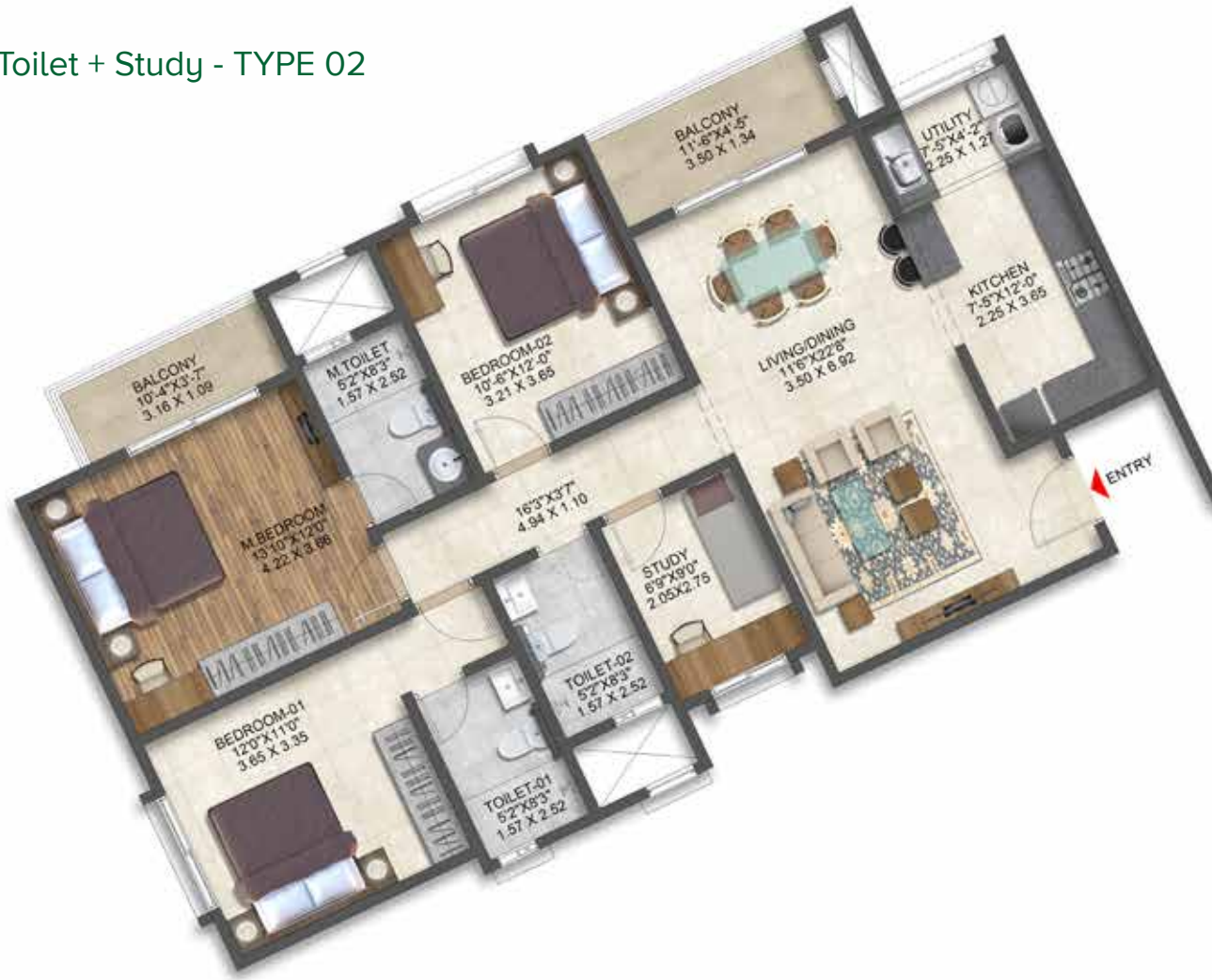
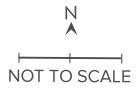


SUPER BUILT-UP AREA	CARPET AREA	BALCONY AREA
155.55 Sq.m. 1674 Sq.ft.	102.80 Sq.m. 1107 Sq.ft.	7.97 Sq.m. 86 Sq.ft.

The information depicted herein viz., master plans, floor plans, furniture layout, fittings, illustrations, specifications, designs, dimensions, rendered views, colours, amenities and facilities etc., are subject to change without notifications as may be required by the relevant authorities or the Developer's architect, and cannot form part of an offer or contract. Whilst every care is taken in providing this information, the Developer cannot be held liable for variations. All illustrations and pictures are artist's impressions only. The information is subject to variations, additions, deletions, substitutions and modifications as may be recommended by the company's architect and/or the relevant approving authorities. The Developer is wholly exempt from any liability on account of any claim in this regard. (1 square metre = 10.764 square feet). E & OE. All dimensions and calculations are done in metric system (M/Sq.m), and imperial system (Ft/Sq.ft) shown is for reference only. All dimensions indicated in the drawing are from unfinished surfaces, excluding plaster thickness and tile thickness.

UNIT PLAN

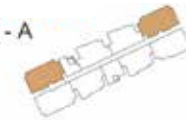
3 Bedroom + 3 Toilet + Study - TYPE 02



KEY PLAN



BLOCK - A



BLOCK - B & C



A-0003 - A-1803, A-0006 - A-1806
 B-0014 - B-1814
 C-0019 - C-1819

SUPER BUILT-UP AREA

161.88 Sq.m.
 1743 Sq.ft.

CARPET AREA

107.48 Sq.m.
 1157 Sq.ft.

BALCONY AREA

8.13 Sq.m.
 88 Sq.ft.



The information depicted herein viz., master plans, floor plans, furniture layout, fittings, illustrations, specifications, designs, dimensions, rendered views, colours, amenities and facilities etc., are subject to change without notifications as may be required by the relevant authorities or the Developer's architect, and cannot form part of an offer or contract. Whilst every care is taken in providing this information, the Developer cannot be held liable for variations. All illustrations and pictures are artist's impressions only. The information is subject to variations, additions, deletions, substitutions and modifications as may be recommended by the company's architect and/or the relevant approving authorities. The Developer is wholly exempt from any liability on account of any claim in this regard. (1 square metre = 10.764 square feet). E & OE. All dimensions and calculations are done in metric system (M/Sq.m), and imperial system (Ft/Sq.ft) shown is for reference only. All dimensions indicated in the drawing are from unfinished surfaces, excluding plaster thickness and tile thickness.